

## series C2000 CEMA C idlers

The Link-Belt® C2000 ball bearing idler bridges the gap between the Link-Belt Series B2000 ball bearing and Series C3000 roller bearing idlers by addressing the needs of less demanding applications such as those of sand and gravel plants. The C2000 belt conveyor idler is designed to handle a variety of light- to medium-weight materials at medium capacities and belt speeds. It offers a wide range of capabilities for users in pulp and paper, chemical, sand and gravel, food processing and environmental related industries.

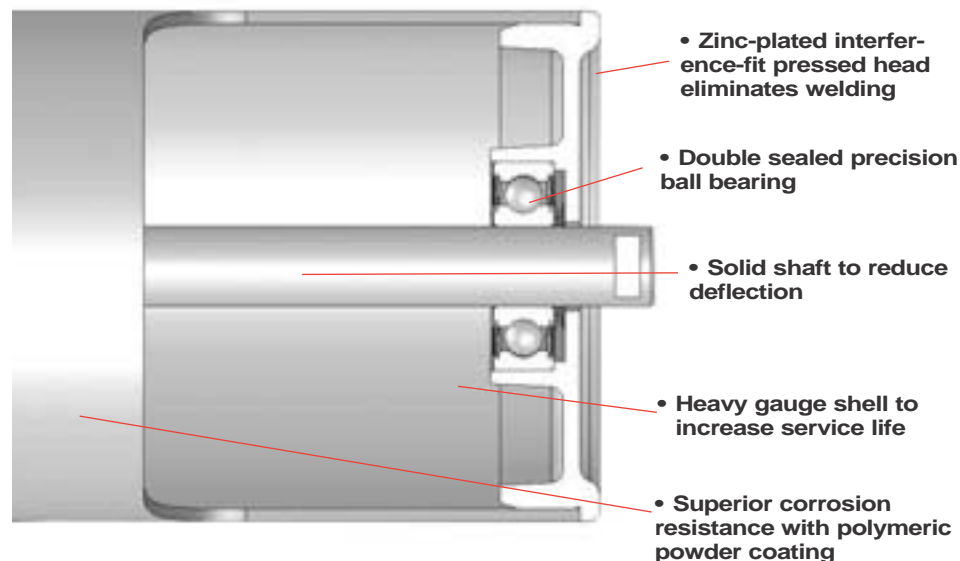
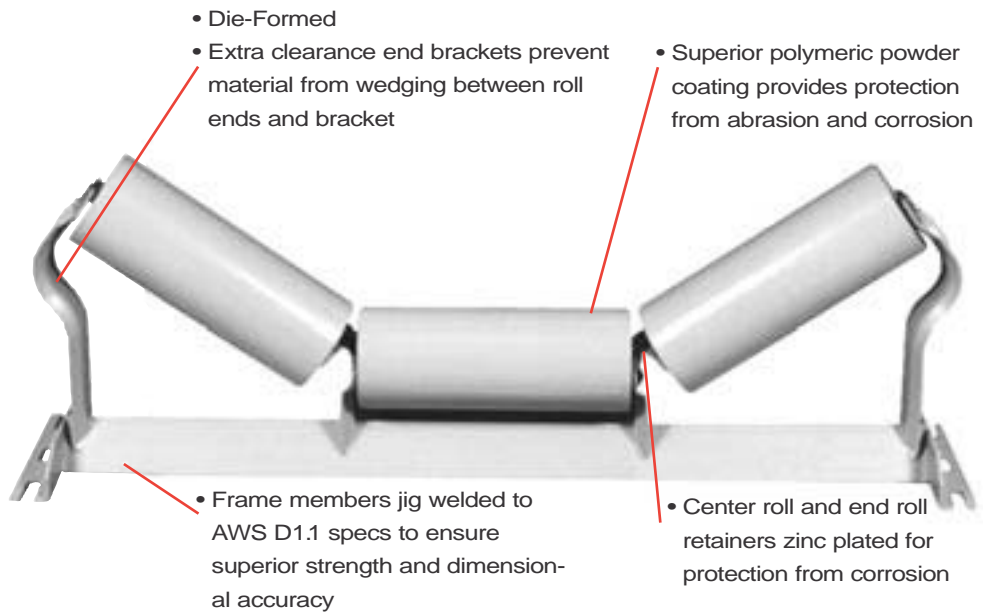
Like the Link-Belt B2000 idler, the newly redesigned C2000 idler is radically different from competitive belt conveyor idlers because it incorporates an interference-fit pressed head design to maintain roll integrity. This pressed head design uses a ductile iron cast head, which eliminates welding and any of its associated problems (distortion, misalignment, weld quality, etc.) and delivers very low T.I.R. (Total Indicator Run Out) values as compared to welded roll designs.

The rugged ductile iron head casting is precision machined for accurate bearing/shaft alignment. The bearings are placed closer to the support which results in a shorter moment arm, minimizing shaft slope and extending bearing life.

The C2000 utilizes a two-step system in preventing contaminants from entering the bearing cavity of the precision, 20mm deep groove ball bearing. The first line of defense is a single-lip, low-friction nitrile wiping seal that is protected by the cast ductile iron head. The second line of defense is the factory-installed contact seal on the ball bearing. The factory-lubricated sealed ball bearing eliminates any need for lubrication and its associated costs.

### Series C2000 idlers are available with 5 or 6-inch diameter rolls featuring:

- “Sealed for Life” design
- Press-fit, rugged ductile iron cast & machined head
- Nitrile rubber shaft contact lip seal for maximum contaminant exclusion
- Can be ordered assembled or unassembled
- Exclusive Link-Belt polymeric coating on roll and frames provides superior corrosion protection
- 20mm 6304 Ball Bearing with seals on both sides
- Exceeds CEMA C load ratings
- Meets CEMA C dimensional criteria
- Broached shaft to add frame stability
- Belt widths 24-inch through 48-inch, (belt width + 9-inch mounting)
- 20° and 35° troughed belt idlers
- 35° troughed training idlers
- Return belt and return training idlers
- Solid steel shaft
- Minimum roll gap to comply with R.M.A. specifications that increase belt life.



# idlers of every type to meet your specific needs

## series C2000

## CEMA C

belt width, inches roll dia., inches

### troughed belt idlers

steel rolls 20°-35°	24-48	5-6
------------------------	-------	-----

### troughed belt training idlers

steel rolls 35°	24-48	5-6
--------------------	-------	-----

### return idlers

steel rolls	24-48	5-6
-------------	-------	-----

### return training idlers

steel rolls	24-48	5-6
-------------	-------	-----

## CEMA classification

series no.	roll dia., in.	basic idler nomenclature	CEMA class	
			old	new
C2000	5	C2500	III	C5
C2000	6	C2600	IV	C6

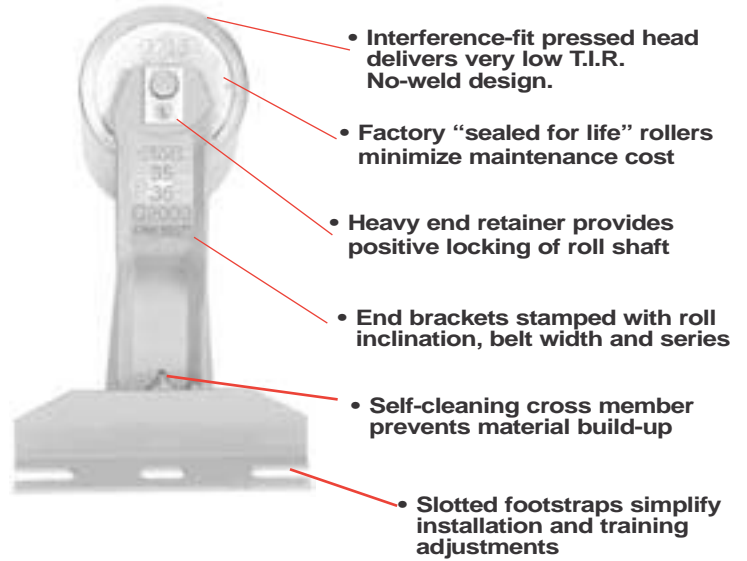
### idler interchange

manufacturer	series no.
FMC Technologies	C2000
Continental	-
Goodman (Jeffrey)	-
Hewitt-Robins	BC
Rexnord	B+
Stephens-Adamson	4400 / 4300
Precision	SB
Precismeca (Transall)	PC / C

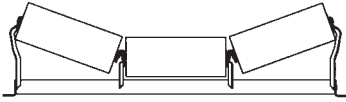


**CAUTION:** Link-Belt Conveyor idlers must be installed, operated and maintained in accordance with accompanying FMC Technologies Service Instructions. Failure to follow these instructions can result in serious personal injury, property damage or both.

FMC Technologies Service Instructions accompany the shipment of equipment. If additional copies of Service Instructions are required, they are available free of charge from FMC Technologies, Material Handling Solutions Division, P.O. Box 1370, Tupelo, MS 38802.

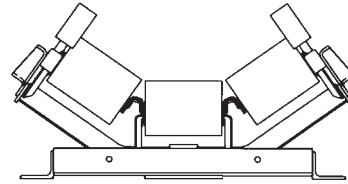


## carrying idler types



**Troughed belt idlers** for general carrying service are available with trough angles of 20° and 35°.

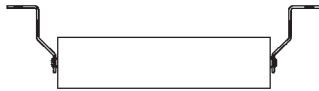
**models:** C2501, C2601, C2528, C2628



**Troughed belt training idlers** automatically train belts and protect belt edges from damage caused by misalignment. Positive action type for belts operating in one direction.

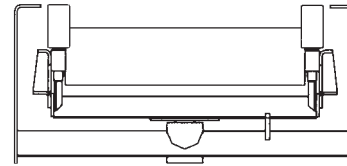
**models:** C2532, C2632

## return idler types



**Return belt idlers** carry the empty belt on the return run.

**models:** C2517, C2617



**Return belt training idlers** train the belt and protect the belt edges from damage caused by misalignment. Positive action type for belts operating in one direction.

**models:** C2520, C2620

# 20° troughed belt idlers equal length rolls

## CEMA C

### 5 // rolls

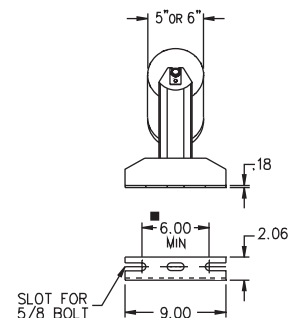
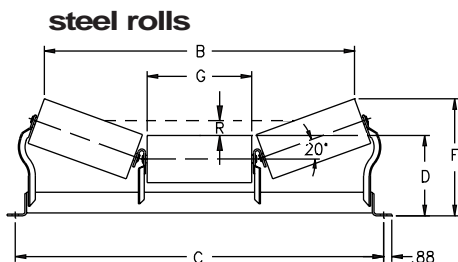
Belt width, inches	Idler number	Idler weight, pounds	B	C	D	F	G	R**
			Inches					
24	C2501-24	39	27.12	33.00	8.25	11.44	9.06	1.25
30	C2501-30	48	32.88	39.00	8.50	12.38	11.06	1.56
36	C2501-36	54	38.62	45.00	8.50	13.06	13.06	1.94
42	C2501-42	61	45.25	51.00	8.50	13.88	15.38	2.25
48	C2501-48	67	51.06	57.00	8.50	14.56	17.38	2.56

### 6 // rolls

Belt width, inches	Idler number	Idler weight, pounds	B	C	D	F	G	R**
			Inches					
24	C2601-24	43	26.50	33.00	8.75	11.88	8.81	1.25
30	C2601-30	53	32.31	39.00	9.00	12.81	10.81	1.56
36	C2601-36	60	38.06	45.00	9.00	13.50	12.81	1.94
42	C2601-42	67	44.69	51.00	9.00	14.25	15.12	2.25
48	C2601-48	74	50.44	57.00	9.00	14.94	17.12	2.56

\*\* To top of discharge or bend pulleys, except foot pulley.

■ 7.5" bolt spacing recommended to permit adjustment.

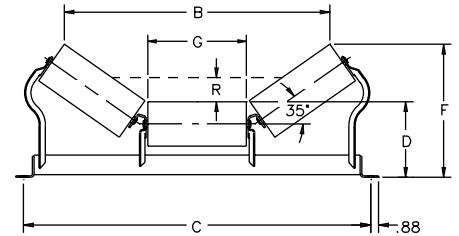


## CEMA C

### steel rolls

#### 5 // rolls

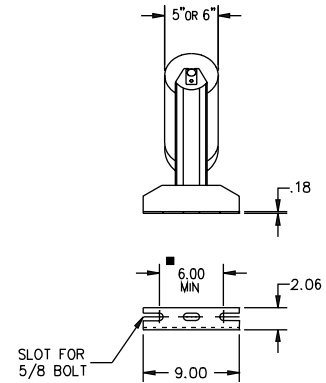
Belt width, inches	Idler number	Idler weight, pounds	B	C	D	F	G	R**
			Inches					
24	C2528-24	40	24.56	33.00	8.25	13.56	9.06	2.12
30	C2528-30	49	29.81	39.00	8.50	14.94	11.06	2.69
36	C2528-36	55	35.12	45.00	8.50	16.12	13.06	3.25
42	C2528-42	62	41.25	51.00	8.50	17.44	15.38	3.81
48	C2528-48	68	46.50	57.00	8.50	18.56	17.38	4.38



#### 6 // rolls

Belt width, inches	Idler number	Idler weight, pounds	B	C	D	F	G	R**
			Inches					
24	C2628-24	44	23.81	33.00	8.75	13.88	8.81	2.12
30	C2628-30	54	29.06	39.00	9.00	15.31	10.81	2.69
36	C2628-36	61	34.31	45.00	9.00	16.44	12.81	3.25
42	C2628-42	69	40.44	51.00	9.00	17.75	15.12	3.81
48	C2628-48	75	45.75	57.00	9.00	18.94	17.12	4.38

\*\* To top of discharge or bend pulleys, except foot pulley.  
 ■ 7.5" bolt spacing recommended to permit adjustment.



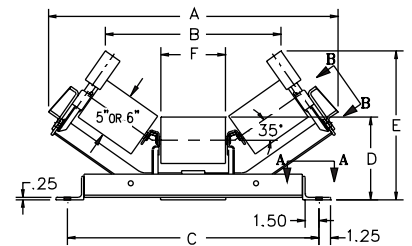
## troughed belt training idlers equal length rolls

### positive action type

(above deck mounting)

#### 5 // rolls

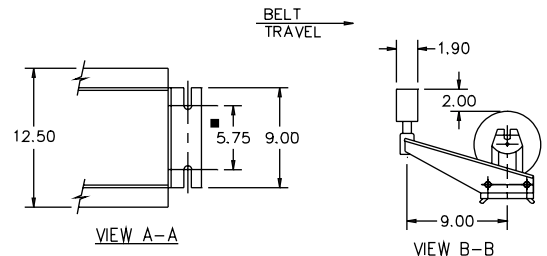
Belt width, inches	Idler number	Idler weight, pounds	A	B	C	D	E	F
			Inches					
24	C2532-24	115	36.69	24.44	33.00	8.88	17.19	9.06
30	C2532-30	130	41.94	29.69	39.00	9.25	18.75	11.06
36	C2532-36	143	47.25	35.00	45.00	9.25	19.88	13.06
42	C2532-42	169	53.31	41.12	51.00	9.62	21.56	15.38
48	C2532-48	183	58.62	46.38	57.00	9.62	22.69	17.38



#### 6 // rolls

Belt width, inches	Idler number	Idler weight, pounds	A	B	C	D	E	F
			Inches					
24	C2632-24	124	36.69	24.44	33.00	9.38	17.19	8.81
30	C2632-30	141	41.94	29.69	39.00	9.75	18.75	10.81
36	C2632-36	154	47.25	35.00	45.00	9.75	19.88	12.81
42	C2632-42	182	53.31	41.12	51.00	10.12	21.56	15.12
48	C2632-48	197	58.62	46.38	57.00	10.12	22.69	17.12

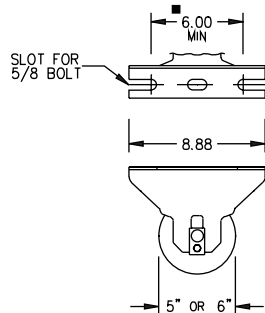
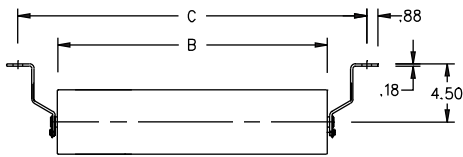
■ 7.5" bolt spacing recommended to permit adjustment.



## return belt idlers

# CEMA C

### steel rolls



### 5 // rolls

Belt width, inches	Idler number	Idler weight, pounds	B	C
			Inches	
24	C2517-24	28	26.88	33.00
30	C2517-30	33	32.88	39.00
36	C2517-36	37	38.88	45.00
42	C2517-42	41	44.88	51.00
48	C2517-48	46	50.88	57.00

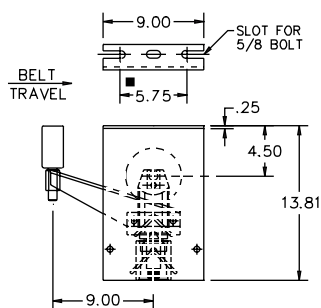
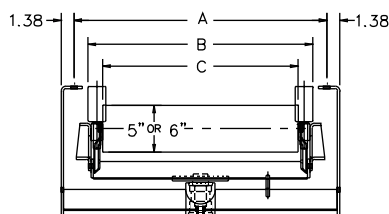
### 6 // rolls

Belt width, inches	Idler number	Idler weight, pounds	B	C
			Inches	
24	C2617-24	31	26.62	33.00
30	C2617-30	36	32.62	39.00
36	C2617-36	41	38.62	45.00
42	C2617-42	46	44.62	51.00
48	C2617-48	51	50.62	57.00

■ 7.5" bolt spacing recommended to permit adjustment.

## return belt training idlers

### steel rolls positive action type



### 5 // rolls

Belt width, inches	Idler number	Idler weight, pounds	A	B	C
			Inches		
24	C2520-24	122	33.00	30.06	26.88
30	C2520-30	149	39.00	36.06	32.88
36	C2520-36	178	45.00	42.06	38.88
42	C2520-42	185	51.00	48.06	44.88
48	C2520-48	206	57.00	54.06	50.88

### 6 // rolls

Belt width, inches	Idler number	Idler weight, pounds	A	B	C
			Inches		
24	C2620-24	125	33.00	30.06	26.62
30	C2620-30	152	39.00	36.06	32.62
36	C2620-36	182	45.00	42.06	38.62
42	C2620-42	190	51.00	48.06	44.62
48	C2620-48	211	57.00	54.06	50.62

■ 7.5" bolt spacing recommended to permit adjustment.